

Sanuk

Urban Thai Kitchen

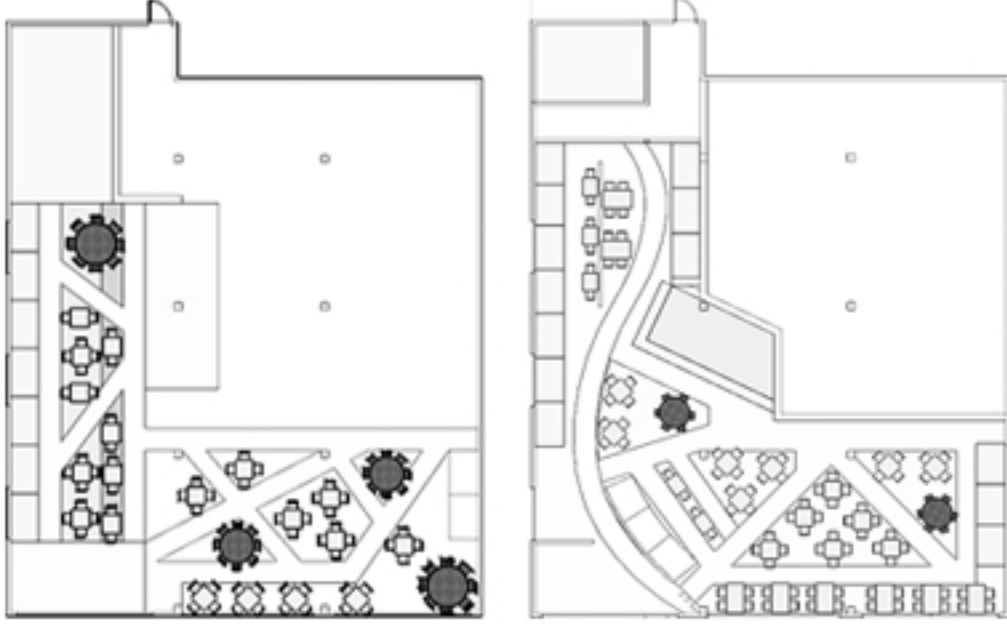
Sanuk is a contemporary Thai restaurant located in St. Petersburg, Florida. The restaurant focuses on the street food atmosphere of Thailand and Bangkok after five. The design will capture the essence of being in Thailand’s culturally rich streets through an open-kitchen, emphasis on verticality, and a layout that resembles the organic street plan of Bangkok. Contrast of light with vibrant accent colors helps to set the urban ambience. The materials, furniture, and light fixtures chosen are similar to the streets of Thailand. The circulation through the restaurant provides patrons and staff with easy movement and accessibility.



Bangkok Glow, by Xavier Portela, served as inspiration for this design. The photographer captured the evening steets of Bangkok. The photos are filled with vendors and lively activity. The photographer augments his shots with use of vibrant colors and dark tones. These enhancements are central to the restaurants design.



The layout and circulation are inspired by the Chao Phraya River and street layout of Bangkok. The river meanders the length of the city and the streets radiate out diagonally.



Open layout supports the Thai belief that eating is seen as a social affair. Tables chosen provide the restaurant with the ability to change layout to accommodate larger parties, allowing patrons to dine in groups, similar to Thai culture.



Dining



Section 1/4"=1'-0"

Materials and Finishes



Combination of various materials and finishes creates a harmonious environment, while enhancing street atmosphere.



Lounge

Dining low to the ground is a characteristic of traditional Asian dining. The lounge area gives patrons the opportunity to experienthe traditional dining aspects of Thailand in a contemporary environment.



Entry View

Murals are an important feature of tradition Asian interiors. The photos from Bangkok Glow are used to create murals in the dining and lounge areas. These murals are backlit with blue LEDs, merging traditional with modern.



Bar View

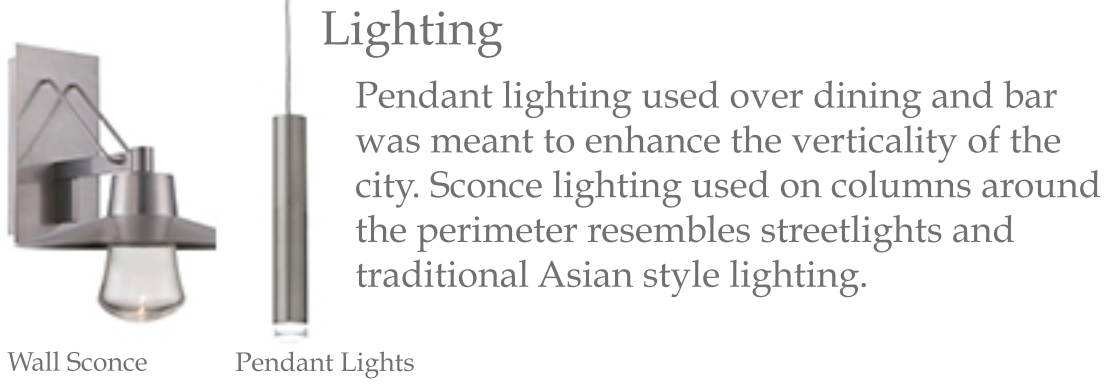
Street vending has become increasingly popular in Thai culture. The glass kitchen wall offers patrons an experience similar to eating on the streets of Thailand.

Furniture

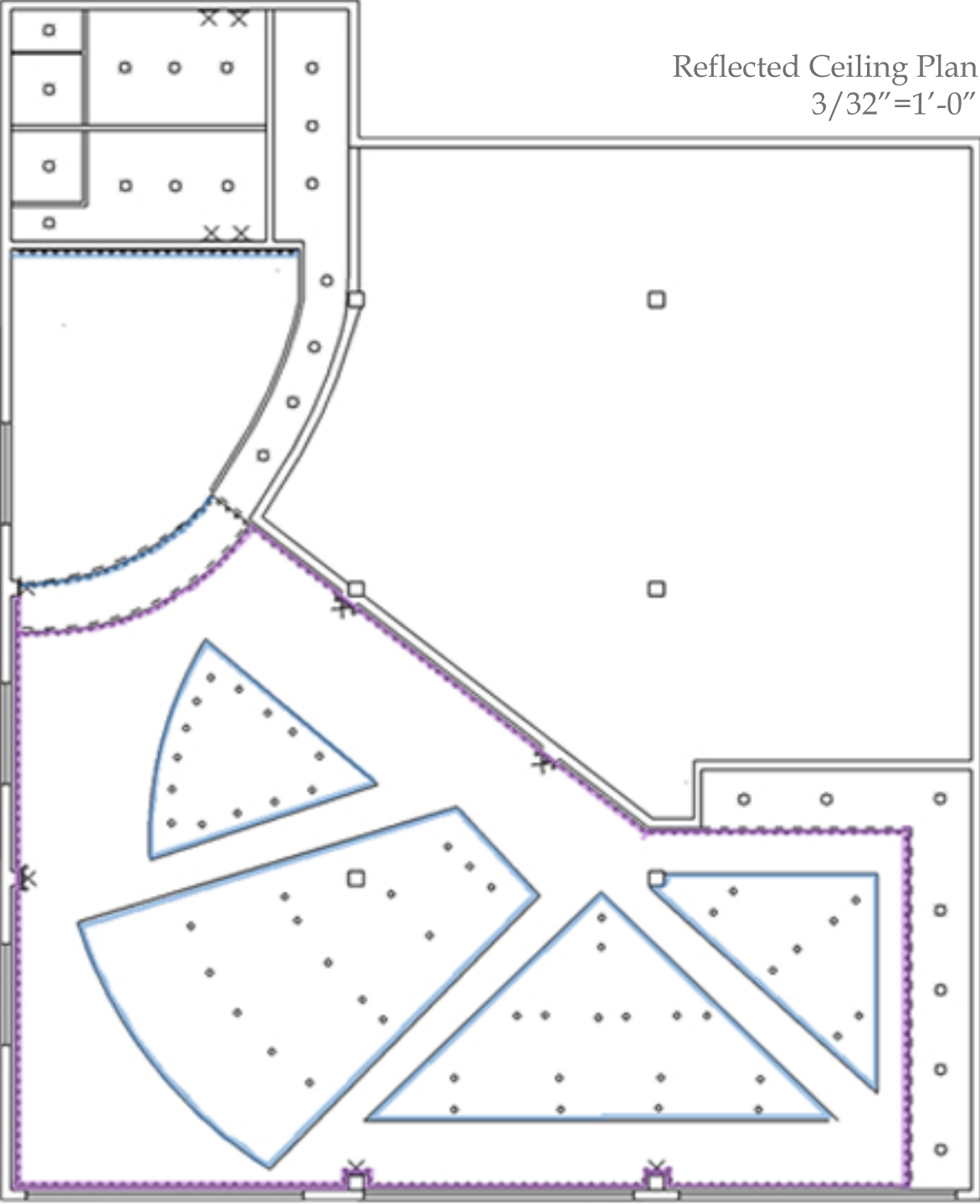


Simple, outdoor style furniture with Asian influence. Merges traditional and modern styles.

Lighting



Wall Sconce Pendant Lights



Reflected Ceiling Plan 3/32"=1'-0"

LED strips are used as accent lighting along the perimeter of the dining room, underneath the bar, back wall of the lounge, and along top edges of ceiling clouds.